



**CORRESPONDENCE FILE 1**  
**(Pages 1 – 56)**  
**GP&P Meeting**

**14eg Tachwedd / 14<sup>th</sup> November 2024**

At yr Ymgynghorion  
To Consultees

Gofynnwch am / Please ask for:

 01492 575031

 School.modernisation@conwy.gov.uk

Dyddiad / Date: 21/10/2024

Annwyl Ymgynghorai / Dear Consultee

**Ymgynghoriad ar arfaethedig i Gyfuno  
Ysgol Glan Gele & Ysgol Sant Elfod**

Bydd Cyngor Bwrdeistref Sirol Conwy yn ymgynghori ar y cynnig i uno Ysgol Glan Gele ac Ysgol Sant Elfod.

Fel rhan o'r ymgynghoriad byddwn yn casglu barn rhieni disgyblion, staff a llywodraethwyr y ddwy ysgol a phartion eraill sydd â diddordeb.

Amgaeir copi o'r ddogfen ymgynghori, sy'n rhoi rhywfaint o wybodaeth ddefnyddiol am y cyfuniad arfaethedig.

Mae'r cyfnod ymgynghori yn rhedeg o 21 Hydref i 2 Rhagfyr 2024.

Bydd canlyniad yr ymgynghoriad yn galluogi'r Cyngor i benderfynu a ddylid bwrw ymlaen â'r cynnig i uno'r ysgolion ai peidio.

Pe bai'r Cyngor yn penderfynu gwneud hynny, yna mae cyfnod gwrthwynebu statudol o 28 diwrnod ac yn ystod y cyfnod hwnnw gellir gwneud gwrthwynebiadau ysgrifenedig i'r cynnig.

P'un a dderbynnir gwrthwynebiadau ai peidio o fewn y cyfnod statudol, bydd y cynnig yn cael ei benderfynu gan yr Awdurdod ar ddiwedd y cyfnod gwrthwynebu o 28 diwrnod.

Croesewir eich barn ar y cynnig hwn.

Yn gywir,

**Consultation on the Proposed Amalgamation  
of Ysgol Glan Gele & Ysgol Sant Elfod**

Conwy County Borough Council will be consulting on the proposed amalgamation of Ysgol Glan Gele & Ysgol Sant Elfod.

As part of the consultation we will be gathering the views of parents of pupils, staff and governors of both schools and other interested parties.

Please find enclosed a copy consultation document, which provides some useful information on the proposed amalgamation.

The consultation period runs from 21<sup>st</sup> October to 2<sup>nd</sup> December 2024.

The outcome of the consultation will enable the Council to decide whether or not to proceed with the proposal to amalgamate the schools.

Should the Council decide to do so, then there is a statutory 28-day objection period during which time objections to the proposal may be made in writing.

Whether or not objections are received within the statutory period, the proposal will be determined by the Authority at the end of the 28-day objection period.

Your views on this proposal are welcomed.

Yours sincerely,



Dr Lowri Brown

Pennaeth Gwasanaethau Addysg (Prif Swyddog Addysg)  
Head of Education Services (Chief Education Officer)

CFI AG 1



**Consultation**  
**on the Proposed Amalgamation of**

**Ysgol Glan Gele**

**and**

**Ysgol Sant Elfod**

**Abergele, Conwy**



This consultation document and appendices are also available on the Consultation page on the Council website.

Mae'r ddogfen yma ar gael yn y Gymraeg / This document is available in Welsh.



**Sir Conwy, yr amgylchedd iawn i ddysgu a chyflawni**

**Conwy County, the right environment to learn and achieve**

## Contents

		<b>Page</b>
1	Description and Benefits of the Proposal	3
1.1	The Proposal to Amalgamate the Existing Schools	5
1.2	Alternative options	5
2	Details of the Affected Schools	7
2.1	Ysgol Glan Gele	7 - 8
2.2	Ysgol Sant Elfod	8 - 9
2.3	Impact on Pupils and Staff	9
2.4	Admission Arrangements	10
2.5	Catchment Area	10
3	Quality & Standards in Education	10
3.1	Curriculum	10
3.2	ESTYN Inspections	11
4	Finance	12
5	Condition of School Buildings	13
6	Community Impact	13
6.1	Community Use of School Facilities	13
6.2	Out of School Childcare	13
7	Transport Impact	13
8	Language Impact	14
9	Equality Impact	16
10	Consultation	18
	Feedback Form	19



## 1. Description and Benefits of the Proposal

Conwy County Borough Council has been reviewing current pupil numbers, equality of funding for pupils and the fitness for purpose of current school buildings across the Authority.

The Welsh Government's Statutory Code of Practice (School Organisation Code – Second Edition) gives guidance to local authorities that can help with this process.

Sections 1.7 and 1.8 of the Code encourage local authorities to look at options available to them and their schools, for example clustering, collaboration, or federation with other schools to increase the school's viability.

The School Organisation Code states that when "describing the proposals, proposers should normally refer to them using the terms set out in this Code (e.g. school closure) but where two or more existing schools become one school operating on more than one site (e.g. where former infant and junior schools become a primary school), the terms 'merger' or 'amalgamation' might be used".

For the purposes of this report the term "amalgamation" will be used.

The Local Authority is proposing the amalgamation of Ysgol Glan Gele and Ysgol St Elfod. The proposed new school would remain located on the sites of the two current schools but would operate under one Board of Governors and one management structure. The purpose of this consultation is to establish the views of the community, potential users, and other important stakeholders.

The consultation is on the basis that, if agreed, the amalgamated school will open in September 2026. Proposals brought forward by the maintaining Local Authority will require the determination by the Executive of the Local Authority in all cases; meaning that if any formal objections that are received through the Statutory process they will be considered and determined by Conwy County Borough Council's Cabinet. Only a Local Authority objection will trigger the requirement for Welsh Ministers' approval where the Local Authority is not the proposer.

Those being consulted with are listed in the below table:

Name/Organisation
Parents, carers and guardians, teachers & staff of Ysgol Glan Gele & Ysgol Sant Elfod
Governors of Ysgol Glan Gele & Ysgol Sant Elfod
Headteacher & Governors of Ysgol Emrys ap Iwan, Ysgol St George and Ysgol Glan Morfa
Church in Wales Diocese of St Asaph & Roman Catholic Diocese of Wrexham
Denbighshire County Council Education Services
Gwynedd County Council Education Services
Welsh Minister for Education & Skills
Welsh Government Schools Management and Effectiveness Division
Assembly Member & Member of Parliament representing area subject to proposals
Local Conwy Councillor for Abergele
Abergele Community Council
Estyn
Teaching & Staff Trade Unions
GWE
Police & Crime Commissioner for North Wales
Conwy CYPP
Conwy Community First
Flying Start Conwy

The consultation will take place during the period from 21 October 2024 ending on the 2 December 2024 inclusive.

A report on the outcome of the consultation will be submitted to a meeting of the Council's Cabinet in February 2025.

**We would like to know your views on this proposal and have suggested the ways in which you can do this at the end of this document.**



Conwy recognises the importance of involving pupils of the schools in the development and improvement of their educational experience and with this in mind will ensure their active participation in the consultation process and implementation. Education Officers will consult with pupils and produce a children and young people's version of the consultation document and ensure that teachers hold sessions to discuss the proposal with pupils and encourage their engagement and feedback which will be shared with Cabinet.

### 1.1 The Proposal to Amalgamate the Two Existing Schools

The proposal is to formally amalgamate Ysgol Glan Gele (Infants) and Ysgol Sant Elfod (Juniors).

The proposal to amalgamate Ysgol Glan Gele and Ysgol Sant Elfod will mean the 'formal' closure of both schools followed by the 'formal' opening of a new school.

The initial proposal for the schools in Abergele as part of the Sustainable Communities Band B programme was to amalgamate Ysgol Glan Gele and Ysgol Sant Elfod and relocate them to a new build school on a new site, co-located with the Welsh primary school, Ysgol Glan Morfa. This proposal was reviewed as part of a prioritisation exercise of all Band B projects. Given the increase in material and labour costs along with the affordability of the Welsh Government Mutual Investment Model methodology, Cabinet (10<sup>th</sup> October 2023) agreed that due to the financial risks not to proceed with a new school build in Abergele at this time.

The proposed new school would remain located on two separate sites, under the leadership of one Headteacher and Board of Governors but with a unified management structure, mission statement, school values, logos, uniform, policies, and procedures.

Cabinet approved the recommendation to consult on this proposal 8<sup>th</sup> October 2024.

During the interim period officers from Education Services have been consulting with the Headteachers and Governors of Ysgol Glan Gele and Ysgol Sant Elfod and they have supported exploring this proposal.

### 1.2 Alternative Options

Given that the initial proposal to merge schools and build a new school is financially unaffordable at present, the second option is to explore the initial amalgamation of both schools.

The other alternative would be to maintain the status quo and keep the schools as separate Junior and Infant schools.

Option	Description	Pros	Cons
Do Nothing	Maintains the status Quo	No additional Costs	No improvements or benefits
Amalgamation	Merge schools on current sites	Balance of costs and benefits	Limited savings
New School build	Merge both schools in a new build school	Maximise benefits and improvements	Already confirmed as unaffordable

The expected advantages and disadvantages of the Proposal to amalgamate Ysgol Glan Gele and Ysgol Sant Elfod have been considered by Education Services and are identified in the table below.

Advantages / Benefits of the Proposal	Disadvantages / Challenges of the Proposal
Headteacher and Governors support this proposal in principle and have expressed an interest in amalgamation.	Staffing implications; potential staff redeployment and/or redundancies

Streamlined policies and structures with a single point of contact for parents/guardians/carers	Development of new day to day operational challenges of a new school i.e. school processes, new uniforms, new school name.
Continuity of curriculum and educational progress of learners between ages 3 and 11, providing continuity and minimising any transitional dips in pupil performance, and focussing on the progress of individual learners in line with Curriculum for Wales.	
Reduced duplication and economies of scale in management of budgets	
Greater sense of school community for all staff, pupils, and parents	
Enhanced opportunities for staff professional development. To increase staff skills across both schools and to ensure that curriculum planning and resource sharing raising pupil standards and outcomes.	

Conwy Education Services have considered any potential risks associated with the proposal to amalgamate the two schools along with the action to be taken to mitigate the risk.

<b>Risks Associated with Proposal</b>	<b>Action taken to Mitigate Risk</b>
Proposal may not be supported and approved by Conwy County Borough Council's Cabinet	Continue to keep Cabinet members updated on the progress of the Proposal and the Strategic Primary School Modernisation Programme through democratic processes

This proposal takes a long-term view of education, demonstrating the appropriate and effective planning for the current and future education provision in Abergele in line with the Strategy for the Modernisation of Conwy Primary Schools.

By amalgamating Ysgol Glan Gele and Ysgol Sant Elfod staff can work together creating stability and a shared vision to provide a consistent and coherent learning environment and offering greater potential for improving levels of achievement within the school.



## 2. Details of the Affected Schools

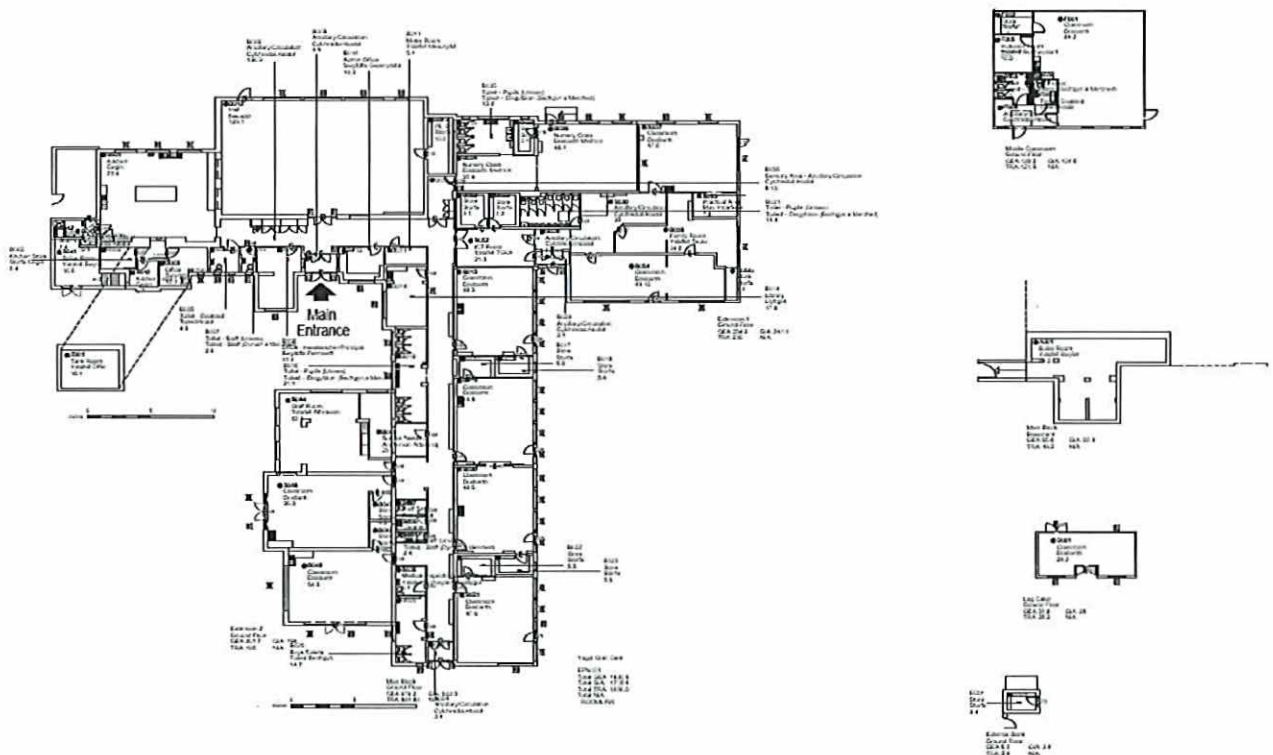


### 2.1 Ysgol Glan Gele

Ysgol Glan Gele is a community infants school, located in the village of Abergele in the county of Conwy, serving the Abergele area. The school, which was initially built in 1953, provides education for pupils between three and seven years old. English is the main language of the school.

The school plan below shows the layout and accommodation available.

Ysgol Glan Gele - School Plan



Ysgol Glan Gele has the capacity to accommodate 242 pupils between the ages of four to seven years old. Data shown below is taken from the statutory Pupil Level Annual School Census (PLASC) which must be undertaken in January each year.

Ysgol Glan Gele pupil numbers for the last 5 years					
	2020	2021	2022	2023	2024
Total statutory aged pupils	227	240	241	226	215

Ysgol Glan Gele pupil projections for the next 5 years					
	2025	2026	2027	2028	2029
Total statutory aged pupils	207	205	204	205	205

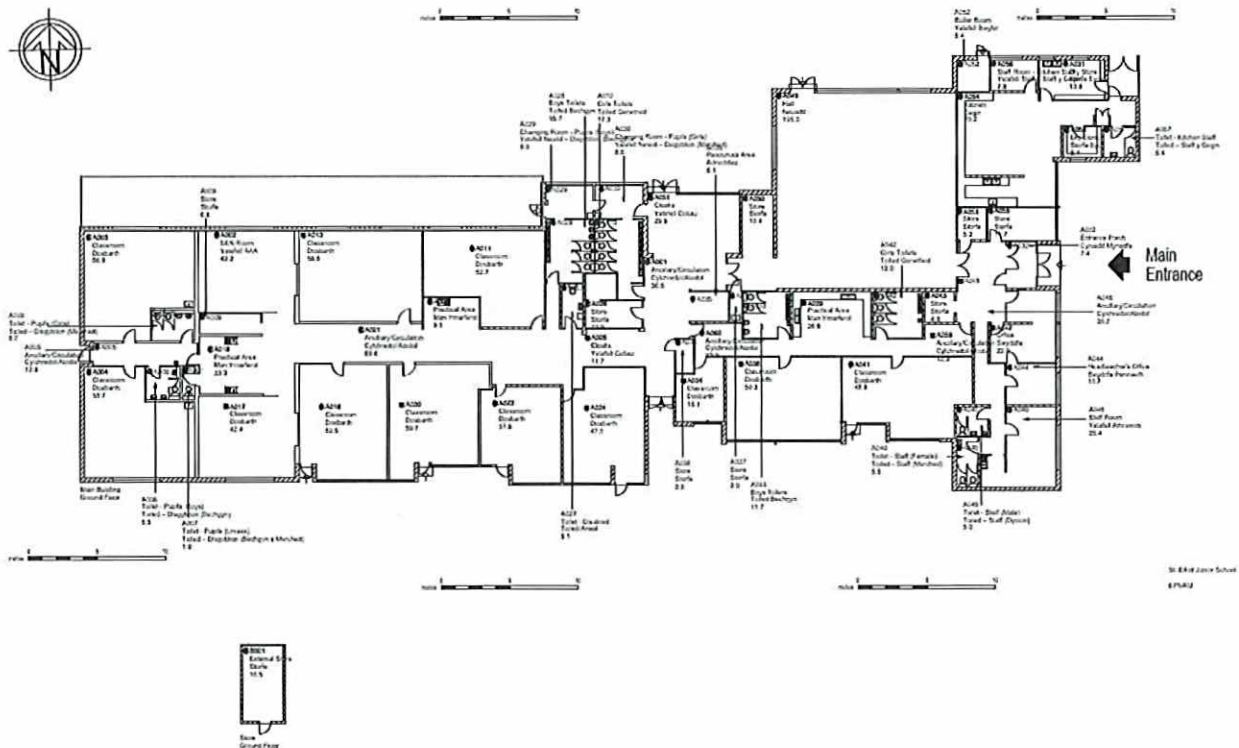
Pupil numbers from 2025 – 2029 are forecasts and subject to change.

## 2.2 Ysgol Sant Elfod

Ysgol Sant Elfod is a community school situated on the outskirts of Abergele, in the County Borough of Conwy. The school, which was initially built in 1972, provides education for pupils between seven and eleven years old. English is the main language of the school.

The school plan below shows the layout and accommodation available.

Ysgol Sant Elfod - School Plan



Ysgol Sant Elfod has the capacity to accommodate 300 pupils between the ages of seven to eleven years old. Data shown below is taken from the statutory Pupil Level Annual School Census (PLASC) which must be undertaken in January each year.

Ysgol Sant Elfod pupil numbers for the last 5 years					
	2020	2021	2022	2023	2024
Total					

statutory aged pupils	295	293	292	297	271
-----------------------	-----	-----	-----	-----	-----

Ysgol Sant Elfod pupil projections for the next 5 years					
	2025	2026	2027	2028	2029
Total statutory aged pupils	292	290	290	282	276

**Pupil numbers from 2025 – 2029 are forecasts and subject to change.**

### 2.3 Impact on Pupils and Staff

Given that the proposal would not result in any change in school site location, it is not anticipated that the proposal will have an adverse impact on pupils.

The main potential changes that pupils will see is around the school name and uniform if proposals are agreed.

For staff, if schools amalgamate, a Temporary Governing Body will work with the Headteacher and in liaison with Education Human Resources officers in establishing the staffing structure for the new school. These proposals will provide a greater opportunity for staff development of skills over the whole primary age curriculum and potential for more specialist staffing and management structures in the all-through school.

#### Ysgol Glan Gele – Current Staff

Teaching Staff FTE numbers			Support Staff FTE				
Head Teacher	Deputy Head	Qualified Teacher	HLTA	Teaching Assistant	Special Needs Support Staff	Admin Staff	School Business Manager or equivalent
1.00	1.00	9.49	1.91	14.18	2.68	1.00	0.22

#### Ysgol Sant Elfod – Current Staff

Teaching Staff FTE numbers			Support Staff FTE				
Head Teacher	Deputy Head	Qualified Teacher	HLTA	Teaching Assistant	Special Needs Support Staff	Admin Staff	School Business Manager or equivalent
1.00	1.00	10.29	0.00	5.26	2.25	0.95	0.22



## 2.4 Admissions Arrangements

Admissions arrangements for the new amalgamated school will continue to be administered by Conwy Education Services.

Teaching groups will remain within the statutory limit of 30 pupils in the Infant classes and 30 or less for Junior pupils.

## 2.5 Catchment Area

In the event of the proposed amalgamation of Ysgol Glan Gele and Ysgol Sant Elfod there will be no changes to the existing catchment area for the school. The new school will have the same catchment area that currently covers both the separate Infants and Junior schools.

Pupils will eventually transfer to the relevant Secondary Schools of Ysgol Emrys ap Iwan or Ysgol Y Creuddyn.

## 3. Quality & Standards in Education

### 3.1 Curriculum

The ESTYN inspection reports for both schools comments as follows on the curriculum provision:

**Ysgol Glan Gele** *“Leaders and teachers have developed a curriculum that reflects the principles of the Curriculum for Wales. They use immersion days to ignite pupils’ interests in their work and allow opportunities for them to contribute their ideas about what they would like to learn. The school provides a broad and balanced range of learning experiences. This includes a wide choice of exciting extra-curricular activities and a variety of educational visits, that enrich the curriculum. Many staff use questioning well to develop pupils’ knowledge and understanding. However, teachers do not always provide pupils with activities that meet pupils’ learning needs closely enough or challenge them suitably. Opportunities for pupils to engage in effective outdoor learning are underdeveloped.”*

**Ysgol Sant Elfod** – *“Leaders and teachers have created an authentic and engaging curriculum that reflects the ethos of the Curriculum for Wales. They plan learning experiences which reflect the local community and the interests of the pupils. Feedback from teachers and staff supports pupils’ progress appropriately. However, often teachers over-direct learning and, as a result, pupils have limited opportunities to choose how they wish to present their work. In addition, teachers do not always provide sufficient learning opportunities for pupils to develop as independent learners and thinkers.”*

Amalgamation would enable enhanced collaboration, providing the following potential benefits for pupils standards, enhanced provision, leadership and management:

- creating a shared educational ethos that supports children from age 3 through to 11
- having both schools working together with ease to track the childrens’ progress from age 3 to 11
- ability to share best practice around promoting the Welsh Language
- enabling pupils and staff from both schools to access specialisms, resources and facilities associated with either phases more easily
- accommodating a wider breadth of activities
- having consistent pastoral care from age 3 to 11
- allowing the community to identify with and support a single primary school and potentially providing a more effective community focussed role through its single governance
- promoting greater interaction allowing opportunities for additional activities which could be supported by parents, children and staff
- reduced duplication and and promoting economies of scale in management of budgets



- providing greater opportunities for staff development and learning from new ways of doing things.

### 3.2 Estyn Inspections

Schools are inspected as part of a national programme of school inspection. The purpose of inspection is to identify good features and shortcomings in schools in order that they may improve the quality of education offered and raise the standards achieved by their pupils (ESTYN).

The links to the full report are included below, and the recommendations of the ESTYN inspection teams for the schools are as follows:

#### 3.2.1 Ysgol Glan Gele: October 2023 - [Inspection report Ysgol Glan Gele 2023 \(gov.wales\)](#)

- R1 Further develop learning experiences to meet the needs of all pupils and to provide sufficient challenge in learning across the curriculum
- R2 Improve the provision for outdoor learning

#### 3.2.2 Ysgol Sant Elfod : September 2023 - [Inspection report St Elfod Junior School 2023 \(gov.wales\)](#)

- R1 Provide opportunities for pupils to make decisions about how they learn, how they respond to feedback, and develop well as independent learners
- R2 Further develop the curriculum to ensure that the school provides a systematic approach to the development of pupils' Welsh language skills
- R3 Improve attendance

Following inspections, schools are required to draw up an action plan to address the recommendations from the inspection. The proposed amalgamation of the two schools is expected to provide an opportunity for further improvement under one Governing Body with a single ethos and policies to address these recommendations.

#### 4. Finance

The revenue allocation for Ysgol Glan Gele for 2024/25 is **£1,038,193** with a budget share per pupil figure of **£4,203**.

For Ysgol Sant Elfod the revenue allocation for 2024/25 is **£1,194,003** with a budget share per pupil figure of **£4,131**.

This is a combined allocation of **£2,232,196**.

The average budget share per primary pupil in Conwy is **£4,664**.

One of the drivers for amalgamation is equality of funding for pupils and through the amalgamation of infants and junior schools the cost per pupil figure for the Abergele area will be rationalised.

Ysgol Glan Gele and Sant Elfod will be funded on the same formula as other schools if they are part of an amalgamation. As part of the Council's funding formula, schools are funded on the number of pupils and on other non-teaching costs.

If the schools were to be merged to become a single school, the formula would calculate a single budget of **£2,199,934**, which is smaller than the budget of operating as two separate schools.

To ensure a smooth transition of funding to maintain educational standards and avoid undue financial strain on the newly merged school the new school would receive transitional protection, as agreed by Cabinet (January 2024).

As the funding for the new school represents a reduction of 1% (**£22,636** after SLA delivery cost retention), the transitional protection will be over 3 years in line with Conwy's approved transitional funding model.

	Year 1 50%	Year 2 25%	Year 3 0%	Total
<b>Protection</b>	£11,318	£5,659	£0	£16,977
<b>Allocation Reduction</b>	£11,318	£16,977	£22,636	£50,931

Additional funding in year one would be 50% of the difference between the funding of the new school and the original two schools and in the second year 25% of the difference between the funding of the new school and the original two schools. In subsequent years, there would be no additional funding and the new school would be funded as one school.

## 5. Condition of School Buildings

Conwy County Borough Council as part of their Asset Management data hold information in relation to the condition of all school buildings (Whole Life Works). They are scored by the following:

A	Serviceable, maintained life with normal maintenance
B	Operational, with minor essential maintenance requirements
C	Operational but with some critical and/or essential maintenance requirement
D	Barely operational, major critical and essential maintenance requirement a risk of breakdown; due for extensive refurbishment or replacement

The scores for each school are detailed below:

Ysgol Glan Gele	Ysgol Sant Elfod
B	B

## 6. Community Impact

### Ysgol Glan Gele and Ysgol Sant Elfod

In an amalgamation, the schools remain open in their communities.

#### 6.1. Community use of school facilities

There is currently no community use of either school.

#### 6.2. Out of School Childcare

Ysgol Glan Gele have Clwb Enfys which is a playgroup and afterschool club. The afterschool club is also available to pupils of Ysgol Sant Elfod and runs every day till 6pm (during term time only).

## 7. Transport Impact

The current Home to School Transport Policy states that free transport will be provided for Primary School pupils who reside over 2 miles from their nearest appropriate school.

There are currently two pupils receiving Home to School Transport to either Ysgol Glan Gele or Ysgol Sant Elfod that live over 2 miles from the school.

Should the Proposal to amalgamate the schools be approved, there will be no changes to the current transport provision.

Further details on school transport can be found on Conwy's web pages - [School Transport - Conwy County Borough Council](#)



## 8. Welsh Language Impact

The Welsh Government recommends that an analysis of the use of the Welsh Language in the schools referred to in this document is provided.

As the table below demonstrates both Ysgol Glan Gele and Ysgol Sant Elfod are English medium schools where all pupils are taught through the medium of English, with less than 25% of the teaching curriculum through the medium of Welsh. Both schools have a mainly English ethos with staff and Governor meetings and pupils informal activities taking place through the medium of English.

The ESTYN reports for both the schools comment on how Welsh is used within the curriculum and in the school as a whole.

**Ysgol Glan Gele** – *“The school develops pupils’ Welsh language skills effectively. Pupils learn about Wales and Welsh culture and develop their understanding of Welsh traditions and cultures. Pupils especially benefit from visits to enhance their knowledge, for example when visiting Conwy and Gwrych castles. The school strengthens its curriculum through an extensive range of extra-curricular activities including running club, construction club and nature detectives.”*

**Ysgol Sant Elfod** – *“The school provides suitable arrangements for pupils to develop their use of Welsh in Welsh lessons. Most teachers are good role models of the Welsh language. They promote the culture and heritage of Wales purposefully, for example providing opportunities for pupils to work with a Welsh graffiti artist. However, opportunities for the pupils to use and extend their Welsh skills outside of Welsh lessons are limited and, as a result, pupils do not develop their language skills well enough.”*

The proposal to formally amalgamate will not impact negatively on the use of the Welsh Language, by having one Governing Body there may be opportunities to work towards improving how the Welsh Language is promoted and expanded through the curriculum and in more informal activities with continued support from the Local Authority.

Analysis of the use of Welsh Language	Ysgol Glan Gele	Ysgol Sant Elfod
Pupil Numbers – Full and Part Time (as of January 2024)	282 (inc. 67 Nursery)	288
Language category of the school	English Medium	English Medium
(PLASC 2024) Percentage of pupils from homes where the language spoken is:		
<i>Does not speak Welsh at Home</i>	1%	2%
<i>Speaks Welsh at Home</i>	0%	2%
<i>Not applicable, cannot speak Welsh</i>	99%	96%
% taught through the medium of Welsh	0%	0%
Pupils language medium in the		
<i>Playground</i>	English	English
<i>Breakfast Club</i>	English	English
<i>After-school club</i>	English	English
School participates annually in:		
<i>Cylch Meithrin / Ti a Fi</i>	No	No
<i>Eisteddfodau</i>	No	No
<i>Urdd Branches</i>	No	No
<i>Other Welsh Medium activities</i>	No	No
The school is used by the community to learn Welsh	No	No
Percentage of Teaching staff able to teach through the medium of Welsh:	-	-



Percentage of Support Staff that are able to teach through the medium of Welsh:	-	-
Percentage of Governors that are able to speak Welsh:	-	-
Language most commonly used during: <i>Governor meetings –</i> <i>PTA meetings</i> <i>Staff meetings</i>	English English English	English English English
(of persons aged 3+) The percentage of the Local Ward that as at census date 2011: <i>Speak Welsh</i>	Abergele 11.6%	Abergele 11.6%
<i>No skills in Welsh</i>	80.4%	80.4%

## 9. Equality Impact

The tables below consider the existing information of the schools in relation to any specific equality strands that may need to be considered during the implementation of the proposals. The information for the schools shows a diverse school population and there is no indication that any pupils would be disadvantaged should the proposal go ahead; given that they will both remain on the same site and pupils will have little change in their daily school routine.

Equality Strand	Ysgol Glan Gele
Race	<p>(PLASC 2024) In Ysgol Glan Gele 90% of its pupils who are over 5 years old are 'White British', and the remaining 10% were 'Mixed', 'Asian', 'Black' and 'Other/Unknown'.</p> <p>PLASC 2024 data tells us that 59.6% of pupils are 'British', 28.7% 'Welsh', 5.7% 'Other', 4.6% 'English' and 1% 'Irish'.</p> <p>Information in relation to race is regarded as 'sensitive data' and as such, the information for pupils under the age of 5 is withheld.</p>
Disability	<p>(PLASC 2024) There are currently around 6% of pupils at Ysgol Glan Gele who receive some support for Additional Learning Needs.</p>
Gender	<p>(PLASC 2024) Of the pupils who currently attend school full time at Ysgol Glan Gele there are 51% boys and 49% girls.</p>
Age	<p>Ysgol Glan Gele is an infant's school providing full time education for pupils aged 4-7 and part time nursery for pupils aged 3-4 years old.</p> <p>Information classed as 'sensitive' e.g. ethnicity, nationality, is not reported for children under 5 years of age, in line with National recommendations.</p>
Religion & Belief	<p>Ysgol Glan Gele is not an affiliated denominational school.</p>
Sexual Orientation	<p>N/A</p>
Welsh Language	<p>See 'Language Analysis' for Ysgol Glan Gele (Section 8)</p>
Other (please state)	<p>(PLASC 2024) 26.0% of pupils that attend Ysgol Glan Gele are currently eligible for free school meals.</p>

Equality Strand	Ysgol Sant Elfod
Race	(PLASC 2024) In Ysgol Sant Elfod 94% of its pupils are 'White British', and the remaining 6% were 'Mixed', 'Asian', 'Black' and 'Other/Unknown'. The PLASC 2024 data tells us that 59.4% of pupils are 'British', 32.6% 'Welsh', 5.6% 'English' and 2.4% 'Other'.
Disability	(PLASC 2024) There are currently around 23% of pupils who receive some support for Additional Learning Needs.
Gender	(PLASC 2024) Of the pupils who currently attend Ysgol Sant Elfod there are 57% Boys and 43% Girls.
Age	Ysgol Sant Elfod is a junior school providing education for pupils aged 7 to 11.
Religion & Belief	Ysgol Sant Elfod is not an affiliated denominational school.
Sexual Orientation	N/A
Welsh Language	See 'Language Analysis' for Ysgol Sant Elfod (Section 8)
Other (please state)	(PLASC 2024) There are around 22.9% of pupils who attend Ysgol Sant Elfod that are currently eligible for free school meals.

## 10. Consultation

This document marks the start of the consultation. This enables all interested parties to give their views on the proposal before any statutory notices are published. This period of consultation will last until the 2<sup>nd</sup> December 2024. As a result of the consultation the Council may decide not to proceed any further with the proposal or to go ahead with the proposal or a modified version of it.

Any formal proposal would be set out and published in the form of a public statutory notice, which would be implemented in accordance with the date given in the statutory notice or any subsequently modified date.

The Council has the powers to propose expansions or closures of schools. If proposals are published following this period of consultation, there then follows a statutory 28-day period during which further representations and formal objections can be made.

Any responses during the Consultation will not be regarded as formal objections. To have responses considered as statutory objections they must be made in writing or by email within the 28-day objection period.

Whether or not objections are received within the statutory period, the proposal will be determined by the Authority at the end of the 28-day objection period. Conwy Cabinet is expected to determine this Summer 2025.

### How can you comment or ask questions on the proposal or suggest alternatives?

- By filling in the attached questionnaire and sending it to Dr Lowri Brown, Head of Education, Education Services, Coed Pella, Colwyn Bay, LL29 7AZ.
- By writing to Dr Lowri Brown, Head of Education, Education Services, Coed Pella, Colwyn Bay, LL29 7AZ.
- By e-mailing your views to [School.Modernisation@conwy.gov.uk](mailto:School.Modernisation@conwy.gov.uk).



**Proposal for the Amalgamation of  
Ysgol Glan Gele  
and  
Ysgol Sant Elfod**

**PLEASE RETURN NO LATER THAN 2<sup>nd</sup> DECEMBER 2024**

To: Dr Lowri Brown, Head of Education Services, Coed Pella, Colwyn Bay, LL29 7AZ.

Online: [www.conwy.gov.uk/AbergeleSchoolsConsultation](http://www.conwy.gov.uk/AbergeleSchoolsConsultation)

You can also email your views to: [School.Modernisation@conwy.gov.uk](mailto:School.Modernisation@conwy.gov.uk)

Do you agree with the proposal to amalgamate Ysgol Glan Gele and Ysgol Sant Elfod?

Yes  No

I am: -

The parent of a child currently at one of the above schools	<input type="checkbox"/>		<input type="checkbox"/>
The parent of a child previously at the school	<input type="checkbox"/>	The parent of a child at another school	<input type="checkbox"/>
A member of staff at the school	<input type="checkbox"/>	A member of staff at another school	<input type="checkbox"/>
A governor of the school	<input type="checkbox"/>	A governor of another school	<input type="checkbox"/>
Other interested party	<input type="checkbox"/>	Name of other school or interested party	
		_____	

My comments are as follows:

---

---

---

---

Do you wish to receive notification via email link of the Consultation Report once published on Conwy County Borough Council Education Services webpage?

Yes  No

If 'Yes' please provide email address: \_\_\_\_\_

**Data Protection:** Conwy County Borough Council is the data controller for the purposes of the General Data Protection Regulations 2016/Data Protection Act 2018. Conwy County Borough Council will manage the information you provide in a manner that complies with the Data Protection Regulation General Data 2016 / Data Protection Act 2018. The information you provide will only be used to provide you with feedback on the above. In order to see the privacy notice and more visit <https://www.conwy.gov.uk/en/Council/Access-to-Information/Privacy-Notices/How-Conwy-County-Borough-Council-uses-your-Information.aspx>



**MINUTES**

**of the quarterly meeting of the Association held on  
Friday 18<sup>th</sup> October 2024 at 10.30am  
Festival Church, Towyn & Kinmell Bay, LL22 9NR**

**Present were:**

Cllr Ian Hodge	Chair & Holywell Town Council
Cllr Norma Davies	Vice Chair & Flint Town Council
Cllr Joan Butterfield MBE	President & Rhyl Town Council
Cllr J Chamberlain-Jones	Rhyl Town Council
Cllr Lynette Edwards	Caerwys Community Council
Catherine Evans	Towyn & Kinmell Bay Town Council
Cllr Paul Fletcher	Abergele Town Council
Cllr Linda Griffiths	Towyn & Kinmell Bay Town Council
Cllr Patrick Hessom	Mostyn Community Council
Cllr Carol Holliday	Prestatyn Town Council
Cllr Alan Manship	Connah's Quay Town Council
Cllr Alan Owen	Connah's Quay Town Council
Cllr Debbie Owen	Connah's Quay Town Council
Cllr Lorraine Rathbone	Buckley Town Council
Cllr Shirley Jones-Roberts	Abergele Town Council
Cllr Bernise McLoughlin	Towyn & Kinmell Bay
Cllr Ted Palmer	Holywell Town Council
Cllr Jackie Webster	Conwy Town Council
Cllr Adrian West	Prestatyn Town Council
Robert Robinson MBE	Secretary & Llanfair Caereinion Town Council

**Apologies received from:**

Cllr Vivienne Blondak	Buckley Town Council
Cllr Michael Davies	Beaumaris Town Council
Cllr Alan James	Rhyl Town Council
Cllr Peter Morton	St Asaph City Council
Gareth Nickels	Rhyl Town Council
Cllr Michael Pearce	Llandudno Town Council
Cllr Andrew Wood	

**1. Welcome**

The meeting received a welcome from the Chair.

The meeting also received a welcome to the meeting by Cllr Bernise McLoughlin of Towyn and Kinmell Bay Town Council who hosted the meeting.



## 2. Minutes of the last Quarterly Meeting

The meeting considered and approved the minutes of the last quarterly meeting held in July 2024.

## 4. Visiting speaker

The presentation from Fields in Trust has been postponed until a later date. The meeting received a presentation from the North Wales Homeless Project.

## 5. Actions taken from the last meeting

The meeting noted the actions from the last meeting as set out below:

No	Subject	Status
1	Issue minutes and post of web site	Completed
2	Meeting with TFW and Welsh Government on rail matters (Chair of both rail committees and secretary to attend)	Completed.
3	Invite Fields in Trust to the October meeting	Completed.
4	Circulate information on VAT partial exemption rules to member councils.	Completed
5	Contact both Welsh and National government to seek a change to the £7,500 limit for partial exemption VAT for local councils.	Completed
6	Complete Association Audit of accounts for the year ending 31 <sup>st</sup> March 2024	Accounts with the auditor.
	Invite the gentleman to the next meeting to explain Homeless project in North Wales.	Completed
7	Clarification of cost of ministers of Welsh Government campaign	Completed
8	Letter to be sent continuing to protest against extra Senedd members and that any lists should be on merit and not gender specific.	Completed





#### **6. Consultation with Welsh Government**

The meeting received presentation slides regarding the review into Town and Community Councils.

After discussion on each topic a letter was prepared for presentation to the Welsh Government.

The meeting noted that the Chair and Secretary will be attending a committee of Ministers and Senedd Members in Cardiff on 27<sup>th</sup> November on the subject.

**See appendix A.**

#### **7. Executive**

The meeting noted the executive meeting minutes from the meeting held on 20<sup>th</sup> September 2024.

#### **8. Finance and governance**

The meeting noted the current bank balances at £4,350.

The meeting considered a new bank mandate with the following members to be signatories:

Cllr Ian Hodge  
Cllr Peter Morton  
Cllr Adrian West  
Robert Robinson.

The meeting noted progress with the 2023-2024 audit.

#### **9. Transport update**

The meeting received a report on a meeting held with the Senedd and Transport for Wales. (see appendix B)

#### **10. Date of next meeting**

The meeting noted the date of the next meeting on Friday 24<sup>th</sup> January 2025 at 10.30am in Beaumaris.

**14. Actions to be taken forward**

The actions to be taken forward from the meeting are:

Subject	Action by
Publish minutes of the meeting	Secretary
Prepare letter to Welsh Government and publish on website and email to members by 8pm same day of the meeting for comment by 10.30pm.	Secretary
Publish letter to Welsh Government on Town & Community Council review	Secretary
Complete bank mandate	Secretary



**APPENDIX A**

18<sup>th</sup> October 2024

Local Government and Housing Committee  
Welsh Government  
Cathays Park  
Cardiff

Dear Sir

**Re Community and Town Councils**

The above Association represents approx. 30 of the larger town and community councils in north and mid Wales including Holyhead, Rhyl, Prestatyn, Holywell, Abergele, Shotton, Llandudno, Conwy, Buckley, St Asaph, Connah's Quay, Hawarden, Caerwys, Ruthin, Llanfair Caereinion, Mostyn, Flint Beaumaris and others.

I write with regard the consultation into Community and Town Councils. The Association met earlier today to discuss the consultation and wishes me to provide their views – please see attached report.

We look forward to attending your committee on 27<sup>th</sup> November in Cardiff. Attending will be Cllr Ian Hodge and myself. I have been asked if we can bring our Vice Chair as well (making 3). No doubt you will let me know.

Thank you for your time.

Yours faithfully

*Robert A Robinson*

Robert A Robinson MBE FRICS FSLCC  
Secretary





**REPORT ON TOWN AND COMMUNITY COUNCILS  
for the  
Local Government and Housing Committee Inquiry**

**1. Introduction**

The Association presents this report in response to the request for information from the Local Government and Housing Committee of the Welsh Government.

The Association has not recorded here a wealth of information which is out there on the subject as the committee will be aware of it.

**2. Representation**

The North & Mid Wales Association of Local Council has been in place for over 40 years representing approx. 30 of the larger Town and Community Councils mainly along the North Wales Coastal area.

**3. How information was gathered**

The Association hosted a meeting (face to face and by zoom) with its members at Towyn & Kimmell Bay with a considerable time of the meeting spent considering the consultation and putting together a presentation of the members views.

This report sets out their views evidence by their own council experience both with their town council and with the county councils.

**4. Overview viewpoint**

The views of our members vary from council to council – depending upon their size. The larger councils have a different approach to those with much smaller budgets. However, there are many subjects upon which the viewpoint is common.

It should be noted that council's which have engaged with us (and indeed One Voice Wales) generally are those who are getting more right than wrong. Those council's which do not respond tend to be those who are not doing so well or have any real interest in the subject.

**5. The role of town & community Councils in Wales**

The role of town and community councils was identified as:

- i) Primary – representing the local community.
- ii) Consultations including planning matters.
- iii) Delivering some local services.
- iv) Working with the local community to create a community feel.



Members are aware of the duties and powers of local councils, particularly regarding budgets, meetings and governance.

The members believed if councils were to be enlarged with more responsibility that consideration should be given to councillors 'being paid' for what will be a position with more responsibility and more time needed.

There was also a feeling that those seeking to be nominated for election should attend a pre-election meeting so that they understand how the council works and what is involved.

### **6. Local service delivery**

Members are concerned about the reductions in local services by principal councils (indication is that from April 2026 the county councils will only carry out such activities as it has a duty to do). The feeling was that county councils were 'dumping' services on town councils without financial support causing larger than justified council tax rises. This leaves a lot of small local services in danger unless someone else steps up to take them over.

Numerous examples of working with county councils were given, some good but mainly poor. Relationships with the county council (in general) were cited as generally poor.

The key issues raised were:

- i) Funding via the precept – possible large rising.
- ii) Double taxation (the county councils have been given the money but are not delivering the local services in some areas).
- iii) The capacity of smaller councils to carry out such functions.

Unless councils are enlarged service delivery locally will prove exceedingly difficult. It has been suggesting in the past that smaller councils 'cluster' and this might be worthy of discussion.

### **7. The value of town & Community Councils in Wales**

The members felt that the town and community were typically fair value for money, delivered local services well and add value by knowing their local area and resident's needs.

A local council can deliver services at much less cost than the principal authorities.





The need for training was sited. Members present nearly all had a training plan which was being implemented directly through external sources. The need for a good town clerk (qualified) was highlighted.

### **8. Is the sector fit for purpose in an evolving local government**

Generally the viewpoint is:

- i) 1/3<sup>rd</sup> yes they are fit for purpose.
- ii) 1/3<sup>rd</sup> are OK.
- iii) 1/3<sup>rd</sup> are not fit for purpose.

The areas of concern are generally around the smaller councils.

The viewpoint is evidenced by the Audit Wales reports on governance issued by them at presentations and in their annual report.

One major issue for councils is finding a good and qualified clerk, essential to the good administration of any council. Many members have experience this over the past years at various times.

It was also noted that a sizeable number of councils either have no clerk or have issues between the clerk and councillors (both ways).

### **9. Governance and scrutiny**

Members were in support of the need for good governance and scrutiny and felt that the sector is doing better in recent years.

Audit Wales has reported on the defects found when completing annual returns with papers. The number of qualified annual returns is of some concern.

There have been complaints on occasions that the audit office is 'difficult' and only reports on papers given (without seeking more information from the authority concerned).

Training was still considered an issue even with the offer of online courses.

It was also noted that 'more rules' comes with a 'price tag' and that this must be recognised and must not progress to a level where it starts to impact on delivery of services.

### **10. Accountability and transparency**

The accountability and transparency of local councils is improving but still a long way to go.





Hybrid meetings have helped in many cases and being able to video council meetings also can help.

The information published by councils on websites is still patchy. The election of councillors is another issue of which social media criticism was highlighted as one of the things which put people off standing.

### **11. Scope of digital technology**

The use of digital technology was discussed with the following items of note:

- i) All member councils have a website.
- ii) Many member councils have a social media presence.
- iii) Many member councils use email to issue agenda and papers (some give the option of email and or paper based)  
continued
- iv) All member councils host hybrid meetings or offer them on advance notice.
- v) The main issue for provision is for the smaller councils who do not have their own premises but meet in church halls etc. Some have no internet in rural areas (or not strong enough signal). Others have to bring their own screens/computers etc to each meeting.
- vi) Help with financing these facilities would be welcomed.
- vii) In person still is considered the best option for meetings although the benefits of hybrid and video link meetings were recognised.

There are issues around those with illnesses (particularly those who cannot hear or see) when using digital technology.

The issue of the Welsh language was also pointed out. Most local councils have their material printed in English with Welsh available upon request. The main reason for this was the cost of translation. Funding to help this would be good but it would need to be ongoing and not time limited.

There was a feeling that digital on its own is not enough and that there is still a need in many communities for paper based material as well.

### **12. New powers and responsibilities to support local communities**

Members welcomed the new powers and responsibilities but were concerned that they needed proper funding to ensure activities could be sustainable.

### **13. The future of town and community councils**

Members are aware of the need for local councils to 'step up to the plate' to help retain some services locally. However, many smaller councils will find this difficult.



Enlarging local councils may help with this but has two dangers:

- i) The loss of local contact if such councils become too large.
- ii) The cultures of local councils can be vastly different.

#### **14. Funding**

The main concern for members is the level of funding required to administer a council in today's world. More legislation and governance requirements requiring more time by the Clerk which in turn has a cost implication.

Members would welcome some direct Welsh Government funding – not via the county councils.

There is an issue around partial exemption VAT for small and medium councils. The limit of £7,500 has been the same for over 20 years and will not be enough if local councils take on many more services. In many cases registering fully for VAT can be a disadvantage.

#### **15. Elections**

The members agree with accountability and transparency and this applies to election of members.

The guidance is that co-option should be the 'last resort.' However, for many councils an election costs around £3,000 a time. This can influence the budget. Members would like to ask the Welsh Government to fund local elections to encourage more to take place.

#### **16. Other comments**

Other subjects raised by the members at the consultation meeting included the feeling that 'North Wales' and 'Mid Wales' are often forgotten in favour of South Wales. The appointment of a North Wales Minister may help but to date it does not appear to be the case.

#### **17. Further information**

The details of the members response can be expanded upon at the meeting scheduled to take place in the Senedd on 27<sup>th</sup> November 2024.

The above information is based upon our member's views expressed to us. Member councils were also encouraged to respond direct to the survey.

**Robert A Robinson MBE FRICS FSLCC Secretary to the Association**





**APPENDIX B**

**MINUTES**

Meeting between Russell George (Senedd), Transport for Wales and the Association

held by video link on Tuesday 20<sup>th</sup> August 2024 at 10am  
Cambrian and North Coast Lines

**1. Present were:**

Russell George Senedd Member  
Cllr Ian Hodge Chair of the Association  
Cllr Trevor Robinson Chair Cambrian Lines Committee  
Robert Robinson Secretary to the Association  
James Price CEO Transport for Wales  
Jan Chaudhry-van-der-Velede  
Gethin Jones Transport for Wales  
Steve Whiteley Transport for Wales  
In attendance Diane Ellis

**2. Issues from last meeting**

The main issues surrounded actions agreed at previous meetings which have not been taken forward.

**3. Improvements**

The improvements observed on the network included:

- i) Slight improvement in train punctuality. (told 93% - actually out of Shrewsbury 65%)
- ii) Extra train on Cambrian 1630 out of Shrewsbury welcome.
- iii) No cuts in services welcome
- iv) Station staff at main interchanges working well.
- v) On board staff still amazing.
- v) Lifts at Newtown welcomed.

**4. Current issues**

The current issues are either still outstanding or need thought:





A	Welshpool Station footbridge	Agreement still not in place, now more than overdue.
B	Welshpool Station improvements	Study completed, no action to improve to date whilst other stations are being improved.
C	Prestatyn Station overcrowding	Still issues of trains not letting passengers on at rush hour periods.
D	Trains between Chester and Shrewsbury	Size of units – confirmation awaited.
E	Main Line train formations: TFW confirmed that with the 21 units predominately being used for the Cambrian Lines only that (with very few exceptions) will all comprise 4 carriages between Birmingham International and Aberystwyth.	Written confirmation awaited.
F	Station Audit meeting	To be arranged but no action to date.
G	Disabled meeting held	No action – still stations not dementia friendly (particularly Welshpool)
H	Deganwy crossing (Llandudno branch)	Still awaiting news.
I	Meeting with Colin Lee still not held	Regarding the splitting of trains on paths to both Holyhead/Cambrian together.
J	Minister promised a meeting on the rail surveys and A55 issues. Still not happened.	No action from WG end.
K	Cambrian Lines stock	158's v 197's timing.
L	Overcrowding still an issue. More surveys in 2025.	How do we move this issue forward.
M	Signage at Shrewsbury and Birmingham still not clear. Meeting with Shrewsbury station manager suggested by TFW.	Not arranged to date.



Note: Still a lot of comments around the new units – uncomfortable ride in particular. It is accepted that we ‘are stuck with them’ for quite a while.

**5. Actions to be taken forward:**

Ref	Subject	Action
A	Welshpool Station footbridge	TFW to investigate and report back by 30/9/24
B	Welshpool Station improvements	TFW to investigate and report back by 30/9/24
C	Prestatyn Station overcrowding	TFW to investigate and report back by 30/9/24
D	Trains between Chester and Shrewsbury	Meeting with Colin Lee as promised at the last meeting to be arranged.
E	Main Line train formations: TFW confirmed that with the 21 units predominately being used for the Cambrian Lines only that (with very few exceptions) will all comprise 4 carriages between Birmingham International and Aberystwyth.	To be discussed at meeting noted in D above.
F	Station Audit meeting	Date to be arranged.
G	Disabled meeting held	TFW to investigate and report back by 30/9/24
H	Deganwy crossing (Llandudno branch)	Russell George to pass on request for information to Network Rail.
I	Meeting with Colin Lee still not held	See D above
J	Minister promised a meeting on the rail surveys and A55 issues. Still not happened.	Copies of emails etc to be sent to Russell George so he can follow this up.
K	Cambrian Lines - 197 stock introduced.	Expected later in 2025 or early 2026.

# NORTH AND MID WALES ASSOCIATION OF LOCAL COUNCILS

CYMDEITHAS CYNGHORAU TREFI A CHYMDEITHASAU MWYAF GOGLEDD CYMRU



L	Overcrowding still an issue. More surveys in 2025.	The Association will action these.
M	Signage at Shrewsbury and Birmingham still not clear. Meeting with Shrewsbury station manager suggested by TFW.	TFW to investigate and report back by 30/9/24
N	Slides with 93% train reliability presented issued by TFW.	Robert Robinson to supply a copy of the slides to TFW.

Target timescale for actions to be completed is 30<sup>th</sup> September 2024.



# NORTH & MID WALES ASSOCIATION OF LOCAL COUNCILS



## NORTH WALES TRANSPORT LIAISON COMMITTEE

### MINUTES

of a meeting of the North Wales Coast Transport Committee  
held on **Friday 4<sup>th</sup> July 2024 at 10.30am by Zoom**

#### **Present were**

Cllr Ian Hodge	Chair
Cllr Norma Davies	Vice Chair
Gail Jones	Transport for Wales
Nick Smith	Avanti Rail
Cllr Michael Davies	Beaumaris Town Council
David Evan	
Cllr Patrick Hesson	Mostyn Community Council
Cllr Michael Pearce	Llandudno Town Council
Robert Saxby	
Cllr Andrew Wood	Abergele Town Council

#### **Apologies for absence**

Cllr Peter Morgan  
Cllr Joan Butterfield  
Cllr Trevor Roberts  
Cllr Bernise McLoughlin

#### **1. Welcome from the Chair**

The meeting received a welcome from the Chair.

#### **2. Minutes of the last meeting**

The meeting considered and approved the minutes of the last North Wales Coast Transport meeting.

#### **3. Actions from the last meeting**

The meeting considered an update on the actions taken since the last meeting as set out overleaf.

## NORTH & MID WALES ASSOCIATION OF LOCAL COUNCILS



### 4. Transport for Wales

Transport for Wales was present at the meeting but due to IT issues information was passed via the Chat Room or the Secretary from a meeting held earlier in the week.

The items of note (North Coast) were:

#### i) Prestatyn

The station at Prestatyn still has two issues which are of concern:

- a) Passengers not being able to access trains in busy times with security guards stopping people boarding is not acceptable.  
***The issue is around the train stock needing to be increased. The security is there for safety when trains are excessively full. The issue is to be raised again with TFW and at a higher level as it is not acceptable.***
- b) Toilets not being located either on the station or close to the station is still an issue – particularly due to the town being a holiday destination.  
***There is no room for toilets on the platform. The toilet provision on platforms is not statutory and there are toilets on the train. Not a satisfactory situation but the same applies to many stations on the network.***

#### ii) Station audit meeting

The TLG meeting in Cardiff will address many of the issues raised in the station audit prepared by the Association.

#### iii) Performance details

The meeting was informed by TFW that reliability had improved greatly and that 93% of services now arrive within 3 minutes of timetable. (it was noted that on the morning of the meeting out of 44 trains leaving TFW has accepted that this figure of 93% was misleading.

## NORTH & MID WALES ASSOCIATION OF LOCAL COUNCILS



### **iv) Number of 2 car units being in service**

The number of 2 car units is still an issue with the Cardiff service in particular overcrowded.

### **v) Services Shrewsbury via Chester to Holyhead**

The services from Birmingham to the North Coast and from Cardiff to the North Coast/Manchester Piccadilly are to always be 3 or 4 car units – this was a statement by TFW at high level. Awaiting confirmation in writing.

### **vi) Request stops (trial at Tygroes and Llanfair PG)**

The trial of push button request stop units at two stations on Anglesey has been completed. There will be further trials on the Heart of Wales line. The report on the trial is not likely to be available until next year.

### **vii) Travel champions**

The introduction of travel champions (staff on platforms) has been welcomed and reports from members is that this is working well in almost all cases. These are staff on the platform to help passengers with their journeys and also to aid situations due to short trains and delays etc.

### **ix) Deganwy crossing**

A brief update on the Deganwy crossing was provided to the meeting. However, more information awaited.

### **x) Meeting in Cardiff (TFW)**

The TLG meeting is being held in Cardiff and TFW is to let the Secretary know how many members may attend. Date to be confirmed.

### **xi) Progress on matters raised**

The meeting was a little concerned that there were items on the agenda which are coming up each time with little progress apparent. A report back on actions is to be given to members by the Secretary in 14 days. (ie at the Quarterly Association meeting in Towyn on 18<sup>th</sup> October).

### **xii) Timetables December 2024 and May 2024**

The meeting noted the timetables issued for December 2024 and May 2025 along with other changes in the future.



## NORTH & MID WALES ASSOCIATION OF LOCAL COUNCILS



### 5. Avanti Rail

The meeting received a pictorial presentation from Nick Smith of Avanti Trains. The main items covered were:

#### a. New trains

The new trains have arrived (electric to Chester and diesel along the coast). The voyager trains will all be out of service by December 2024.

#### b. Timetables driver training

There have been some issues with timetables due to drivers being out for training on the new units. This has now been completed which should lead to a better service.

#### c. Euston and 60 miles out

There are issues with the first 60 miles out of Euston with the infrastructure and signalling. There are joint meetings taking place to resolve any issues.

#### d. Delays

Delays in services are recorded as follows:

87% of trains arrive within 15 minutes of due time.

57% of trains arrive within 3 minutes of due time.

2/3 of the delays are due to Network Rail issues and not the operator.

#### e. Seating on new units compared with the old

The new class 805 units now in service (5 car sets) compare with the voyagers as follows:

Voyager 256 seats (230 standard and 26 first class)

Class 805 299 seats (274 standard and 25 first class)

There is more space for luggage on the new trains.

#### f. Timetable December 2024

The timetable for December 2024 was noted with 9 trains through to Euston each day.

The hourly service to Chester is to be strengthened with 2 trains Chester to London per hour. This will be phased in over time.

#### g. Naming of trains

The meeting suggested naming the new trains. Consideration to this may well be taken forward.

#### h. Survey work

The Association survey work in 2025 will include Avanti services.

## NORTH & MID WALES ASSOCIATION OF LOCAL COUNCILS



### **i. Other information**

Further information can be gained from the presentation slides issued separately.

The meeting thanked Nick Smith for his presentation.

The slides from the Avanti Rail presentation are to be circulated following the meeting.

### **6. Meeting with Welsh Government and Transport for Wales**

A meeting with the CEO of TFW along with Welsh Government was held on 20<sup>th</sup> August 2024 with a list of actions agreed – see attached minutes of that meeting. A response was promised (their date) to be issued to all items listed by 30<sup>th</sup> September. As at 4<sup>th</sup> October there has been no response. This is to be chased up on Monday 7<sup>th</sup> October. The results will be circulated to all members.

### **7. Survey work in 2025**

The survey dates and format to be considered at the next meeting in March 2025 for implementation in July/August and later in the year (off peak).

### **8. Dates of future meetings**

The meeting noted the dates for meetings of both the North Coast, Cambrian and Joint Transport Committees as follows:

Joint Cambrian and North Coast Transport	Cambrian Lines	North Coast Lines
Friday 10 <sup>th</sup> January 2024		
Friday 4 <sup>th</sup> July 2025	Friday 14 <sup>th</sup> March 2025	Friday 7 <sup>th</sup> March 2025

PS Cllr Bob Murray has stepped down from the Committee, thank you Bob for your interest and support. Bob wishes me to pass on his best wishes to all on the group.

## NORTH & MID WALES ASSOCIATION OF LOCAL COUNCILS



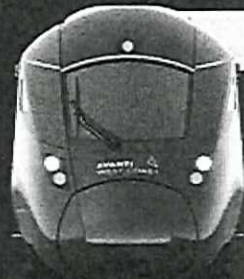
### 8. Actions from the meeting

The following actions are to be taken forward:

Ref	Action	By
1	Minutes to be prepared, sent out in draft and then published on the web site at <a href="http://www.northwalesassociation.org.uk">www.northwalesassociation.org.uk</a>	Robert
2	TFW to report back to the secretary on all items listed in minute no 4.	Gail
3	Slides from the Avanti presentation to be circulated.	Robert/Nick
4	Date for TLG meeting in Cardiff to be clarified.	Robert/Gail
5	Update from meeting with TFW and Welsh Government to be issued within 14 days (at the Association Quarterly Meeting on 18 <sup>th</sup> October).	Robert



# HELLO EVERO



## Our new Class 805 and Class 807 trains

It's an exciting time for us as our new Evero fleet will enter service this year. A £350m investment, these 23 new trains will transform the travelling experience for customers who use our services between London and the Midlands, Chester, North Wales and the North-West.

Our new Evero fleet is:

- ✓ Greener
- ✓ Roomier
- ✓ More comfortable

It shows our commitment to the West Coast, and means we can bring feel good travel to all communities and regions we serve on our network.

## Quick overview

### How many coaches?

Class 805

Class 807



### Are they longer than Voyagers?

Each coach on an Evero train is 26m. A Voyager coach is 23m.



### How many seats?

Class 805s have 299 seats, whilst Class 807s have 451.

Class 805

Class 807



- First (25)
- Standard (274)

- First (49)
- Standard (402)

### Can they be joined together?

Class 805 trains can be joined together to make a 10-coach train.



10-coach train

## What's onboard our new Evero trains



### Customers in Standard:

- Improved seats, with ergonomic design based on how people sit and to increase leg room
- Seat back light with two lighting modes
- One plug socket and two USB charging points at every pair of seats
- More table seats with wireless table charging



### Customers in First:

- One plug socket and one USB charging point at every seat
- First Class food and drink service – similar to the current Voyager service
- More space compared to Standard and tables at every seat



### Each train has:

- A traffic light reservation system
- Real-time passenger information screens
- An onboard shop which is larger than the Voyager shop
- Five toilets on Class 805 and six on Class 807, with baby-changing facilities in each one
- Four reservable bike spaces
- Larger luggage racks and more space for bags between seats



### Customers with accessibility needs:

- Two wheelchair spaces, with a wheelchair accessible toilet next to each one
- Braille seat numbering
- Audio and visual information announcements

#HELLOEVERO

AVANTI  
WEST COAST





## Technical details



**Train manufacturer:**  
Hitachi Rail Europe



### Are these trains bi-mode?

Our Class 805 trains are bi-mode. They can run under diesel or electric power. Our Class 807 trains are electric power only.



### Can these trains tilt?

The trains can't tilt like our Pendolinos, however the improved acceleration of the fleet, as well as line speed improvements by Network Rail, means that journey times won't be longer.



### Are they greener?

More environmentally friendly, it is predicted the new trains will also dramatically cut carbon emissions by **two thirds** with the trains they are due to replace.\*

\*Figures from the Avanti West Coast Decarbonisation Road Map which was developed with Aecom which sets out our path to net zero. It is predicted the new trains will also dramatically cut carbon emissions by 68.64 percent. The figure compares 2019 with 2025.

## Our Evero trains

### Class 805 - 5-coach bi-mode trains

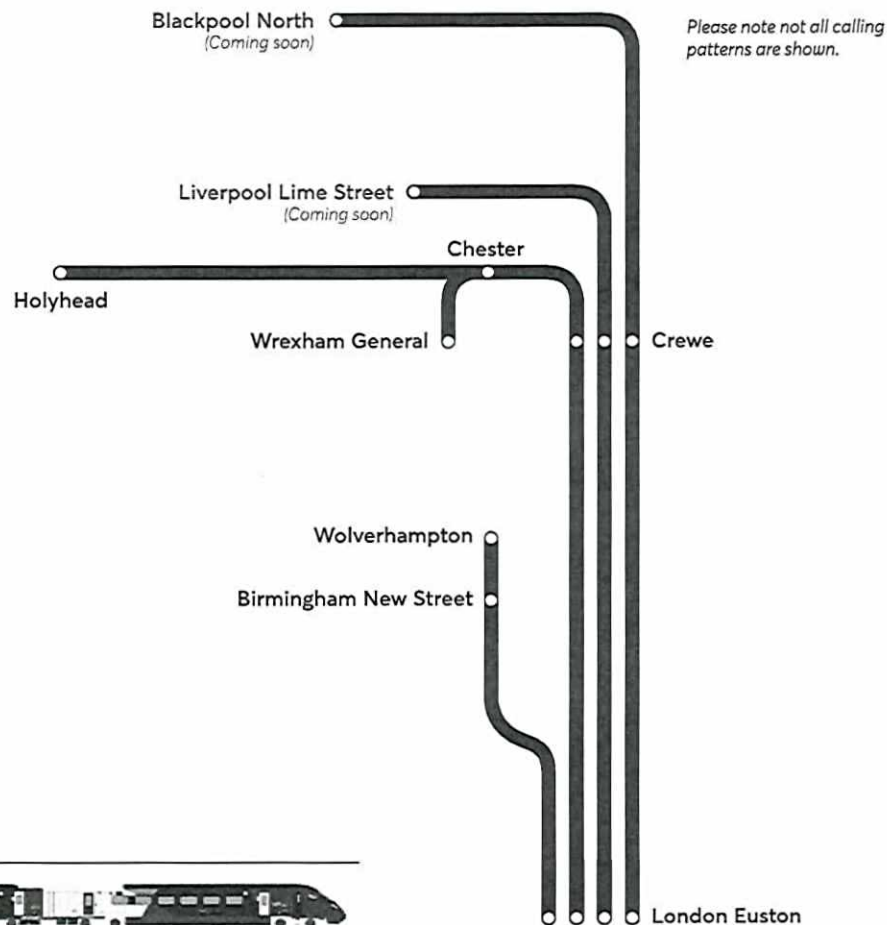


### Class 807 - 7-coach fully electric trains



## Evero's routes

The Evero fleet will serve routes between London to the Midlands, Chester and North Wales at first. It will then go to the North-West.



07 00 170 47



**GORCHYMYN CEFNFFORDD YR A55 (Y GERBYTFFORDD TUA'R DWYRAIN RHWNG CYFFORDD 24 (CYFNEWIDFA'R FAENOL), CONWY A CHYFFORDD 27 (CYFNEWIDFA TALARDY), SIR DDINBYCH) (GWAHARDD CERBYDAU, BEICWYR A CHERDDWYR DROS DRO) 202-**

Mae Gweinidogion Cymru yn bwriadu gwneud Gorchymyn o dan adran 14 o Ddeddf Rheoleiddio Traffig Ffyrdd 1984 ymhen dim llai na 7 niwrnod i ddyddiad yr Hysbysiad hwn. Mae angen y Gorchymyn er mwyn gwneud gwaith ar gefnffordd yr A55, neu gerllaw iddi, rhwng Cyffordd 24 (Cyfnewidfa'r Faenol), Abergele, Conwy a Chyffordd 27 (Cyfnewidfa Talardy), Llanelwy, Sir Ddinbych.

Effaith y Gorchymyn arfaethedig fydd gwahardd dros dro bob cerbyd (ac eithrio'r rhai a ddefnyddir gan y gwasanaethau brys ac ar gyfer y gwaith), a phob beiciwr a cherddwr rhag mynd ar y darnau o'r A55 a bennir yn yr Atodlen i'r Hysbysiad hwn. Disgrifir y llwybr arall yn yr Atodlen hefyd.

Ni all cerbydau sy'n fwy na 3 metr o led ddefnyddio'r llwybr arall a dylent gael eu parcio dros nos mewn ardaloedd dynodedig er mwyn aros i'r ffordd ailagor.

Disgwylir y bydd y gwaharddiadau dros dro yn dod i rym ar 3 Tachwedd 2024 ac yn weithredol dros nos (20:00 – 06:00 o'r gloch) hyd 30 Tachwedd 2024 neu hyd nes y caiff yr arwyddion traffig dros dro eu symud ymaith yn barhaol.

Dim ond yn ystod y dyddiadau a bennir uchod y disgwylir i'r Gorchymyn fod yn weithredol. Er hynny, bydd yn parhau'n ddilys am gyfnod o 18 mis ar y mwyaf rhag ofn y bydd angen ailamserlennu'r gwaith neu wneud gwaith canlyniadol neu waith arall. Bydd hysbysiad ymlaen llaw am unrhyw newidiadau i'r amseroedd a'r dyddiadau yn cael ei arddangos cyn gwneud unrhyw waith a ailamserlennir.

**Gellir cael copi print bras o'r Hysbysiad hwn oddi wrth: Y Gangen Orchmynion, Trafnidiaeth, Llywodraeth Cymru, Parc Cathays, Caerdydd CF10 3NQ.**



**J SADDLER**  
Trafnidiaeth  
Llywodraeth Cymru

**YR ATODLEN**

1. Y darn o brif gerbyttffordd tua'r dwyrain yr A55 rhwng ffordd ymadael tua'r dwyrain Cyffordd 24

**THE A55 TRUNK ROAD (EASTBOUND CARRIAGEWAY BETWEEN JUNCTION 24 (FAENOL INTERCHANGE), CONWY & JUNCTION 27 (TALARDY INTERCHANGE), DENBIGHSHIRE) (TEMPORARY PROHIBITION OF VEHICLES, CYCLISTS & PEDESTRIANS) ORDER 202-**

The Welsh Ministers propose, in not less than 7 days from the date of this Notice, to make an Order under section 14 of the Road Traffic Regulation Act 1984, which is necessary to undertake works on or near the A55 trunk road between Junction 24 (Faenol Interchange), Abergele, Conwy and Junction 27 (Talardy Interchange), St Asaph, Denbighshire.

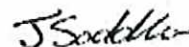
The effect of the proposed Order will be to temporarily prohibit all vehicles (other than those being used by the emergency services and the works), cyclists and pedestrians from proceeding on the lengths of the A55 specified in the Schedule to this Notice. The alternative route is also described therein.

Vehicles greater than 3 metres wide will be unable to use the alternative route and should park up overnight at designated areas to wait for the road to reopen.

The temporary prohibitions are expected to come into force on 3 November 2024 and operate overnight (20:00 – 06:00 hours) until 30 November 2024 or until the temporary traffic signs are permanently removed.

Although the Order is only expected to operate during the period specified above it will remain valid for a maximum period of 18 months, as a contingency, should the work need to be rescheduled or consequential or other work is required. Advance notice of any changes to times and dates will be displayed before any rescheduled work.

**A copy of this Notice in larger print can be obtained from Orders Branch, Transport, Welsh Government, Cathays Park, Cardiff CF10 3NQ.**



**J SADDLER**  
Transport  
Welsh Government

**SCHEDULE**

1. The length of the main A55 eastbound carriageway between the eastbound exit slip road at Junction 24 (Faenol Interchange) and Junction 27 (Talardy Interchange).

CF10 3NQ 43



(Cyfnewidfa'r Faenol) a Chyffordd 27 (Cyfnewidfa Talardy).

2. Y darn o ffordd ymuno tua'r dwyrain Cyffordd 24 (Cyfnewidfa'r Faenol).

3. Y darnau o ffyrdd ymuno tua'r dwyrain Cyffordd 25 (Bodelwyddan) a Chyffordd 26 (Parc Busnes Llanelwy).

Y llwybr arall yw ymadael â'r gerbyttfordd tua'r dwyrain wrth Gyffordd 24 (Cyfnewidfa'r Faenol) a mynd ar hyd yr A547 tua'r dwyrain a'r A525 tua'r de i ailymuno â'r A55 drwy ddilyn ffordd ymuno tua'r dwyrain Cyffordd 27 (Cyfnewidfa Talardy).

2. The length of the eastbound entry slip road at Junction 24 (Faenol Interchange).

3. The lengths of the eastbound entry slip roads at Junction 25 (Bodelwyddan) and Junction 26 (St Asaph Business Park).

The alternative route is to leave the eastbound carriageway at Junction 24 (Faenol Interchange) and proceed along the A547 eastbound and A525 southbound to rejoin the A55 via the Junction 27 (Talardy Interchange) eastbound on slip.

202- Rhif (Cy. )

202- No. (W. )

**TRAFFIG FFYRDD, CYMRU**

**ROAD TRAFFIC, WALES**

Gorchymyn Cefnffordd yr A55 (Y Gerbyttfordd tua'r Dwyrain rhwng Cyffordd 24 (Cyfnewidfa'r Faenol), Conwy a Chyffordd 27 (Cyfnewidfa Talardy), Sir Ddinbych) (Gwahardd Cerbydau, Beicwyr a Cherddwyr Dros Dro)

The A55 Trunk Road (Eastbound Carriageway between Junction 24 (Faenol Interchange), Conwy & Junction 27 (Talardy Interchange), Denbighshire) (Temporary Prohibition of Vehicles, Cyclists & Pedestrians) Order

202-

202-

*Gwnaed*

\*\*\*\*\* 202-

*Made*

\*\*\*\*\* 202-

*Yn dod i rym*

3 Tachwedd 2024

*Coming into force*

3 November 2024

Mae Gweinidogion Cymru, sef yr awdurdod traffig ar gyfer y darn perthnasol o Gefnffordd yr A55, wedi eu bodloni y dylid gwahardd traffig ar ddarnau penodedig o'r gefnffordd oherwydd gwaith y bwriedir ei wneud ar y ffordd neu gerllaw iddi.

The Welsh Ministers, as traffic authority for the relevant length of the A55 Trunk Road, are satisfied that traffic on specified lengths of the trunk road should be prohibited because of works proposed on or near the road.

Mae Gweinidogion Cymru, felly, drwy arfer y pwerau a roddwyd iddynt gan adran 14(1) a (4) o Ddeddf Rheoleiddio Traffig Ffyrdd 1984(1), yn gwneud y Gorchymyn hwn.

The Welsh Ministers, therefore, in exercise of the powers conferred upon them by section 14(1) and (4) of the Road Traffic Regulation Act 1984(1), make this Order.

**Enwi, Cychwyn a Dehongli**

**Title and Commencement and Interpretation**

1. Enw'r Gorchymyn hwn yw Gorchymyn Cefnffordd yr A55 (Y Gerbyttfordd tua'r Dwyrain rhwng Cyffordd 24 (Cyfnewidfa'r Faenol), Conwy a Chyffordd 27 (Cyfnewidfa Talardy), Sir Ddinbych) (Gwahardd Cerbydau, Beicwyr a Cherddwyr Dros Dro) 202- a daw i rym ar 3 Tachwedd 2024.

1. The title of this Order is the A55 Trunk Road (Eastbound Carriageway between Junction 24 (Faenol Interchange), Conwy & Junction 27 (Talardy Interchange), Denbighshire) (Temporary Prohibition of Vehicles, Cyclists & Pedestrians) Order 202- and it comes into force on 3 November 2024.

(1) 1984 p. 27; amnewidiwyd adran 14 gan adran 1(1) o Ddeddf Traffig Ffyrdd (Cyfyngiadau Dros Dro) 1991 (p. 26) ac Atodlen 1 iddi. Yn rhinwedd O.S. 1999/672, ac adran 162 o Ddeddf Llywodraeth Cymru 2006 (p. 32) a pharagraff 30 o Atodlen 11 iddi, mae'r pwerau hyn yn arferadwy bellach gan Weinidogion Cymru o ran Cymru.

(1) 1984 c. 27; section 14 was substituted by the Road Traffic (Temporary Restrictions) Act 1991 (c. 26), section 1(1) and Schedule 1. By virtue of S.I. 1999/672, and section 162 of, and paragraph 30 of Schedule 11 to, the Government of Wales Act 2006 (c. 32), these powers are now exercisable by the Welsh Ministers in relation to Wales.

2. Yn y Gorchymyn hwn—

ystyr ystyr “cerbyd esempt” (“*exempted vehicle*”) yw unrhyw gerbyd sy’n cael ei ddefnyddio gan y gwasanaethau brys ac mewn cysylltiad â’r gwaith sy’n arwain at y Gorchymyn hwn;

ystyr “cyfnod y gwaith” (“*works period*”) yw’r cyfnod sy’n dechrau am 20:00 o’r gloch ar 3 Tachwedd 2024 ac sy’n dod i ben pan gaiff yr arwyddion traffig dros dro eu symud ymaith yn barhaol;

ystyr “y gefnffordd” (“*the trunk road*”) yw Cefnffordd yr A55 Caer i Fangor.

**Gwaharddiadau**

3. Ni chaiff neb, yn ystod cyfnod y gwaith, yrru unrhyw gerbyd, ac eithrio cerbyd esempt, ar y darnau o’r gefnffordd a bennir yn yr Atodlen i’r Gorchymyn hwn.

4. Ni chaiff neb, yn ystod cyfnod y gwaith, reidio unrhyw feic pedal ar y darnau o’r gefnffordd a bennir yn yr Atodlen i’r Gorchymyn hwn.

5. Ni chaiff neb, yn ystod cyfnod y gwaith, gerdded ar y darnau o’r gefnffordd a bennir yn yr Atodlen i’r Gorchymyn hwn.

**Cymhwys**

6. Nid fydd y gwaharddiadau yn erthyglau 3, 4 a 5 yn gymwys ond ar yr adegau ac i’r graddau hynny y bydd arwyddion traffig yn eu dangos.

**Cyfnod para’r Gorchymyn hwn**

7. Bydd y Gorchymyn hwn yn para am 18 mis ar y mwyaf.

Llofnodwyd ar ran Ysgrifennydd y Cabinet dros Drafnidiaeth a Gogledd Cymru, un o Weinidogion Cymru.

Dyddiedig

\*\*\*\*\* 202-

*Nicci Hunter*  
Arweinydd y Tîm Busnes  
Llywodraeth Cymru

**YR ATODLEN**

Y darn o brif gerbyttffordd tua’r dwyrain y gefnffordd sy’n ymestyn o ffordd ymadael tua’r dwyrain Cyffordd

2. In this Order—

“exempted vehicle” (“*cerbyd esempt*”) means any vehicle being used by the emergency services and in connection with the works giving rise to this Order;

“the trunk road” (“*y gefnffordd*”) means the A55 Chester to Bangor Trunk Road;

“works period” (“*cyfnod y gwaith*”) means the period commencing at 20:00 hours on 3 November 2024 and ending when the temporary traffic signs are permanently removed.

**Prohibitions**

3. No person may, during the works period, drive any vehicle, other than an exempted vehicle, on the lengths of the trunk road specified in the Schedule to this Order.

4. No person may, during the works period, ride any pedal cycle on the lengths of the trunk road specified in the Schedule to this Order.

5. No pedestrian may, during the works period, proceed on the lengths of the trunk road specified in the Schedule to this Order.

**Application**

6. The prohibitions in articles 3, 4 and 5 apply only during such times and to such extent as indicated by traffic signs

**Duration of this Order**

7. The maximum duration for this Order is 18 months.

Signed on behalf of the Cabinet Secretary for Transport and North Wales, one of the Welsh Ministers.

Dated the

\*\*\*\*\* 202-

*Nicci Hunter*  
Business Team Leader  
Welsh Government

**SCHEDULE**

The length of the main eastbound carriageway of the trunk road that extends from the eastbound exit slip road at Junction 24 (Faenol Interchange), Abergele,

CK1 Pg 46



24 (Cyfnewidfa'r Faenol), Abergele, Conwy hyd at ganolbwynt Cyffordd 27 (Cyfnewidfa Talardy), Llanelwy, Sir Ddinbych.

Y darnau o ffyrdd ymuno tua'r dwyrain Cyffordd 24 (Cyfnewidfa'r Faenol), Cyffordd 25 (Bodelwyddan) a Chyffordd 26 (Parc Busnes Llanelwy).

Conwy to the centre-point of Junction 27 (Talardy Interchange), St Asaph, Denbighshire.

The lengths of the eastbound entry slip roads at Junction 24 (Faenol Interchange), Junction 25 (Bodelwyddan) and 26 (St Asaph Business Park).

## ATC Deputy Clerk

---

**From:** ATC Clerk  
**Sent:** 28 October 2024 18:25  
**To:** ATC Deputy Clerk  
**Cc:** Tracey Brennan  
**Subject:** FW: Immunisation Clinics

**Follow Up Flag:** Follow up  
**Flag Status:** Flagged

Hi Ryan

Can you add this to your next Agenda please as it would be best if members wished to write to BCUHB rather than us as staff just emailing as this has been raised by residents.

Many thanks

*Mandy*

Mandy Evans  
Clerc y Dref/Town Clerk  
Cyngor Tref Abergele Town Council

Os ydych wedi derbyn yr e-bost hwn ar gam, anfonwch o a [info@abergeletowncouncil.gov.wales](mailto:info@abergeletowncouncil.gov.wales)  
If you have received this email in error, please forward it to [info@abergeletowncouncil.gov.wales](mailto:info@abergeletowncouncil.gov.wales)

Peidiwch a printio'r neges yma os nad oes angen - Please don't print this e-mail unless you really need to  
Lleihau Ailddefnyddio Ailgylchu ✓ Reduce Re-use Recycle ♻️

---

**From:** Tracey Brennan <cllr.t.brennan@abergeletowncouncil.gov.wales>  
**Sent:** 28 October 2024 08:19  
**To:** ATC Clerk <clerk@abergeletowncouncil.gov.wales>  
**Subject:** Immunisation Clinics

Good morning Mandy,

I have been approached by several members of the public complaining about the changed venue for the autumnal community immunisation clinic.

The main point is the location and difficulty of accessibility of the clinic being held at Mynnd Seion. Many of our older residents attending the clinic have mobility issues and are struggling negotiating the slope to the hall and others are not able to walk the distance from the bus stop. Lack of parking has also been raised.

It was also reported to me that one resident who could not physically negotiate the slope went home very upset that they may be wasting NHS time and worrying about getting their immunisation.

Can we please have this subject put on the next agenda for discussion about writing to the health board to raise this important issue?

Many thanks

CFI PG 48  
1



## Appeal Decision

---

by N Jones BA (Hons) MSc MRTPI

an Inspector appointed by the Welsh Ministers

Decision date: 15/10/2024

Appeal reference: CAS-03411-K7V3V9

Site address: Oak House, Groes Lwyd, Abergele, LL22 7SU

---

- The appeal is made under section 78 of the Town and Country Planning Act 1990 against a failure to give notice within the prescribed period of a decision on an application for planning permission.
  - The appeal is made by Mr David Dean against Conwy County Borough Council.
  - The application Ref 0/51268 is dated 23 November 2023.
  - The development proposed is the proposed change of use from B1 office building to 3 no residential units, Unit A, B and C, alterations and extensions of outbuilding into 1 no residential unit.
  - A site visit was made on 17 September 2024.
- 

### Decision

1. The appeal is dismissed.

### Procedural Matters

2. The appeal was made against the Council's failure to issue a decision within the prescribed period. The Council subsequently issued a decision within the dual jurisdiction period, refusing planning permission. The appellant has been provided with an opportunity to comment on the Council's reasons for refusal.
3. In response to the reasons for refusal, the appellant has provided a Green Infrastructure Statement. The Council has been provided with an opportunity to comment on its content.

### Main Issue

4. With regard to the Council's decision notice, the main issues are the effect of the proposal on the character and appearance of the Abergele Conservation Area (CA) and whether the proposal would respond appropriately to green infrastructure.

### Reasons

#### *Character and appearance*

5. The appeal site is comprised of a large stone building and outbuilding set within tree-lined grounds and is accessed off a residential street. Some of the openings in the largest of the buildings had been boarded up at the time of my site visit with broken windowpanes



indicative of some vandalism. The outbuilding to the rear was in a further state of dereliction, and open to the elements. Described in the Council's officer report as a former vicarage and coach house, the appeal buildings have more recently been in use as offices but have since become vacant. I have not been provided with a copy of the Council's Conservation Area Appraisal but, as I was able to observe at my site visit, the Council states it identifies the building as a notable limestone building with important views towards the grade II\* listed St Michael's Church to its south. I recognise that the appeal buildings are not listed but despite their current condition, they nevertheless retain historic detailing and features which make them pleasing buildings in their own right and which contribute to the quality and attractiveness of their surroundings which I saw in the immediate environs of the Abergele CA is comprised of a mix of individual and terraced dwellings, commercial and religious buildings. Whilst the existing tree and boundary vegetation provide some screening, views towards the appeal buildings are available from Groes Lwyd as well as from the adjoining cemetery which I saw is also used as a pedestrian thoroughfare between Groes Lwyd and Market Street.

6. The Council raises no objection to the principle of converting the buildings to residential use and from my own observations, the intended use of the buildings to create residential units would be compatible with their location within a mainly residential area. In relation to the largest of the buildings, there would be little external alteration to its form, character or appearance as part of the intended works.
7. Although much of its original form would be retained to contain ground and first floor bedrooms, the existing outbuilding would be extended to its side and rear to accommodate additional living space. The steeply angled hipped roof and intended openings facing Groes Lwyd would reflect the form and proportions of the existing structure. Whilst I saw that many properties exhibit uPVC windows and doors in the immediate vicinity, the intended use of aluminium materials would be an appropriate and sympathetic addition.
8. However, the intended flat roof element would extend along the entire width of the building, including the depth of the rear extension. Its eaves line would intersect the eaves line of the hipped roof extension and would result in an awkward juncture between these two elements. The inharmonious interface between the two roof forms would be a jarring element. Owing to its large scale and form, exacerbated by its intended unrelieved rendered external treatment, the proposed flat roof side extension would visually dissect and detract from the tall and elegant form of the existing outbuilding.
9. Moreover, the overly large window openings intended for the building's western elevation would lack coherence with existing apertures. Whilst it would not be widely visible from the street, the single window in the rear northern elevation would also lack the proportions of existing openings.
10. I recognise that the scheme is intended to minimise the effects of the proposal on the living conditions of neighbouring occupiers. Nevertheless, it would result in an unsympathetic and incongruous scheme which, although its effects would be localised, would be unacceptably harmful to the character and appearance of the building and the CA.
11. I conclude that the proposal would fail to preserve or enhance the character and appearance of the Abergele CA and so would fail to comply with Conwy Local Development Plan (LDP) Policies DP/3 and CTH/2 which require that all new development will be of high quality, sustainable design which protects local character and distinctiveness of the Plan Area's built historic and natural environment and that development proposals which affect a heritage asset, including Conservation Areas and/or its setting, shall preserve or, where appropriate, enhance that asset. It would also



be contrary to LDP Policy DP/4 which states that planning permission will not be granted where the proposed development would have an unacceptable adverse impact on, amongst other things, the built form. It would also fail to comply with the Council's Supplementary Planning Guidance LDP1 'Householder Design Guidance' (LDP1) and LDP09 'Design' (LDP09), which contain useful detailed design guidance including consideration of how the external design, amongst other things, ensures that the appearance of the development reflects, compliments and enhances the character of the area and that extensions should be designed to complement the character of a property or street or area and amongst other things, the shape and pitch of the roof and the size and shape of openings should be considered.

### *Green infrastructure*

12. Chapter 6 of Planning Policy Wales (Edition 12) (PPW) requires that schemes should be designed, amongst other things, to take into account the existing green infrastructure assets to ensure no fragmentation or loss of connectivity whilst maximising ecosystem resilience. In addition, development must provide a net benefit for biodiversity and improve, or enable the improvement, of the resilience of ecosystems. A net benefit for biodiversity is the concept that development should leave biodiversity and the resilience of ecosystems in a significantly better state than before, through securing immediate and long-term, measurable and demonstrable benefit. LDP Policy NTE/3, compatible with national planning policy advice, requires that new development should aim to conserve and, where possible, enhance biodiversity.
13. The appellant's Bat Activity Survey indicates that there is no visible evidence of bats within the appeal buildings, but emergence surveys show that bats fly into the site from the east. The appeal scheme would retain existing green infrastructure including mature trees and vegetation on the site and thereby maintain the connectivity of habitat with nearby gardens and the adjoining cemetery. I consider the proposed reasonable avoidance measures including construction methodology and low luminance lighting on a short timer would ensure protected species were safeguarded and the provision of bat boxes would provide suitable biodiversity enhancement. These matters could be secured by planning conditions.
14. I conclude that the proposal would respond appropriately to green infrastructure and would therefore comply with LDP Policy NTE/3 and PPW advice, and LDP Policy DP/6 which states that development proposals must comply with national planning policy and guidance.

### **Planning Balance**

15. I recognise that the appeal site is within an accessible and sustainable location and the proposal would secure the refurbishment of a vandalised building. These factors weigh in favour of the appeal scheme. The intended development would be served by appropriate parking provision and from my observations at my site visit, although the proposed outbuilding extension would be close to the rear openings and rear garden areas of properties at Y Gerddi, given the intended height of those extensions and the placement of openings, there would be no unacceptable effects on the living conditions of neighbouring occupiers. I have found that the proposal would respond appropriately to green infrastructure and would provide biodiversity enhancement. However, these are all matters which would be expected of any development and are of neutral weight. I acknowledge the local support for the scheme to provide affordable housing locally. Nevertheless, based on the submitted calculations, the proposal would not viably contribute towards affordable housing, which weighs against the scheme. Moreover, I

Ref: CAS-03411-K7V3V9

have found that the development would fail to preserve or enhance the character and appearance of the Abergele CA, and I consider this harm to be overriding.

**Other Matter**

16. Matters raised by the appellant in relation to the Council's progress of the application are not before me in this appeal, which I have considered on its planning merits.

**Conclusion**

17. For the above reasons, and having regard to all matters raised, the appeal is dismissed.

18. In reaching my decision, I have taken account of the requirements of sections 3 and 5 of the Well Being of Future Generations (Wales) Act 2015. I consider that this decision is in accordance with the Act's sustainable development principle through its contribution towards one or more of the Welsh Ministers well-being objectives as required by section 8 of the WBFG Act.

*N Jones*

INSPECTOR



## ATC Deputy Clerk

---

**From:** ATC Info  
**Sent:** 30 October 2024 14:30  
**To:** ATC Deputy Clerk  
**Subject:** FW: Planning Application 0/52063 Cable Landing Station North Wales Business Park  
**Attachments:** Plan 1.jpg; Plan 2.jpg; Plan 3.jpg; Plan 4.jpg

**Follow Up Flag:** Follow up  
**Flag Status:** Flagged

### Ryan Grimward

Dirprwy Clerc y Dref/Deputy Town Clerk  
Cyngor Tref Abergele Town Council

Os ydych wedi derbyn yr e-bost hwn ar gam, anfonwch o a [info@abergeletowncouncil.gov.wales](mailto:info@abergeletowncouncil.gov.wales)  
If you have received this email in error, please forward it to [info@abergeletowncouncil.gov.wales](mailto:info@abergeletowncouncil.gov.wales)

Peidiwch a printio'r neges yma os nad oes angen - Please don't print this e-mail unless you really need to

Lleihau Ailddefnyddio Ailgylchu ✓ Reduce Re-use Recycle ♻️

**From:** [REDACTED]  
**Sent:** 30 October 2024 12:55  
**To:** Cllr Charlie McCoubrey <cllr.charlie.mccoubrey@conwy.gov.uk>; Cllr Paul Luckock <cllr.paul.luckock@conwy.gov.uk>; Cllr Andrew Wood <cllr.andrew.wood@conwy.gov.uk>  
**Cc:** ATC Info <info@abergeletowncouncil.gov.wales>; Pauline Heap-Williams (ATC) <cllr.p.heap-williams@abergeletowncouncil.gov.wales>; John Jones <Cllr.J.Jones@abergeletowncouncil.gov.wales>; Shirley Jones-Roberts <cllr.s.jones-roberts@abergeletowncouncil.gov.wales>; Keilah Yarwood <Cllr.k.yarwood@abergeletowncouncil.gov.wales>; Cllr Paul Fletcher <Cllr.P.Fletcher@abergeletowncouncil.gov.wales>; Diane Green <cllr.d.green@abergeletowncouncil.gov.wales>; Cllr Alan Hunter <cllr.alan.hunter@conwy.gov.uk>; russ@rusdrage-architects.com  
**Subject:** Planning Application 0/52063 Cable Landing Station North Wales Business Park

### Mae'r Neges hon Gan Anfonwr Allanol / This Message Is From an External Sender

Daeth y neges hon o'r tu allan i'ch sefydliad / This message came from outside your organization.

Dear all,

Some of you may remember that during the construction of the McBride Homes (North Wales Business Park) site I approached you with a suggestion to negotiate with the landowner/ agent to create a cycle/pathway access at the edge of plot 5700 leading on to Heol Awel without success. The land agent said he would look at it again if a developer purchased the plot which is now the case.

Since then, Cartrefi Conwy bought some of the land to increase car parking facilities, but I see today a planning application has been published 0/52063 for the construction of a Cable Landing Station the land which partly butts on to the Heol Awel. This, to me, provides an opportunity for talks with the applicants to see if they will include in their planning application construction of a cycle/pathway access to Heol Awel during the installation works.

I am fully aware of the funding scarcity but is there someone who could approach Sustrans, Gwynt y Mor, or the Town Council to part fund the cycle/footway if the developer is unwilling to do so?

I believe additional access via the suggestion I offer is an opportunity not to be missed.

I looked forward to your observations.

Kind regards.



cc. Mr Jim Macmahon Design and Development Management Limited

cc. [russ@rusdrage-architects.com](mailto:russ@rusdrage-architects.com)

## ATC Deputy Clerk

---

**From:** ATC Info  
**Sent:** 04 November 2024 14:36  
**To:** ATC Clerk; ATC Deputy Clerk; ATC Placeplan  
**Subject:** FW: North Wales Technology Park Ltd- planning application 0/52063

**Follow Up Flag:** Follow up  
**Flag Status:** Flagged

FYI

**From:** Steve West <Steve.West@nwtp.co.uk>  
**Sent:** 04 November 2024 14:33  
**To:** rees.abergele@gmail.com  
**Cc:** Cllr Charlie McCoubrey <cllr.charlie.mccoubrey@conwy.gov.uk>; Cllr Paul Luckock <cllr.paul.luckock@conwy.gov.uk>; Cllr Andrew Wood <cllr.andrew.wood@conwy.gov.uk>; ATC Info <info@abergeletowncouncil.gov.wales>; Pauline Heap-Williams (ATC) <cllr.p.heap-williams@abergeletowncouncil.gov.wales>; John Jones <Cllr.J.Jones@abergeletowncouncil.gov.wales>; Shirley Jones-Roberts <cllr.s.jones-roberts@abergeletowncouncil.gov.wales>; Keilah Yarwood <Cllr.k.yarwood@abergeletowncouncil.gov.wales>; Cllr Paul Fletcher <Cllr.P.Fletcher@abergeletowncouncil.gov.wales>; Diane Green <cllr.d.green@abergeletowncouncil.gov.wales>; Cllr Alan Hunter <cllr.alan.hunter@conwy.gov.uk>; Russ Drage <russ@rusdrage-architects.com>  
**Subject:** North Wales Technology Park Ltd- planning application 0/52063

**Mae'r Neges Hon Gan Anfonwr Annibynadwy / This Message Is From an Untrusted Sender**

Nid ydych wedi gohebu â'r anfonwr hwn o'r blaen. / You have not previously corresponded with this sender.

Good afternoon,

I have just seen your e mail of 30 October regarding the above application to site a small cable landing station on the Business Park and would like to clarify the position regarding your request for a footpath through to Heol Awel.

The cable landing station will occupy only a small corner of plot 5700 and will be accessed from the road that serves the Cartrefi Conwy carpark which is not in close proximity to Heol Awel. The balance of this plot has not been sold and remains available for development. Construction of a footpath across the plot at this stage could compromise our ability to find a buyer and it is for this reason that I cannot agree to your suggestion.

Kind regards

Steve

Steve West  
Managing Director  
North Wales Technology Park Ltd  
Commodore House  
North Wales Business Park  
Abergele  
LL22 8LJ



## ATC Deputy Clerk

---

**From:** darren kirk <northwalesauctions@hotmail.co.uk>  
**Sent:** 30 October 2024 16:46  
**To:** ATC Deputy Clerk  
**Subject:** Re: I'm A Celebrity Sculptures

**Mae'r Neges hon Gan Anfonwr Allanol / This Message Is From an External Sender**

Daeth y neges hon o'r tu allan i'ch sefydliad / This message came from outside your organization.

Afternoon Ryan,

I have spoken to Nick and we are selling them (hopefully) on 24<sup>th</sup> November. He will be bringing them down around 15<sup>th</sup>/16<sup>th</sup> so we can picture them up and get them online asap.

I have spoken to a reporter friend and he is happy to do a piece for BBC Wales Today news too so there should be a deal of interest 😊

Darren

---

**From:** ATC Deputy Clerk <deputyclerk@abergeletowncouncil.gov.wales>  
**Sent:** 30 October 2024 09:21  
**To:** darren kirk <northwalesauctions@hotmail.co.uk>  
**Cc:** Nick Williams <cllr.n.williams@abergeletowncouncil.gov.wales>  
**Subject:** RE: I'm A Celebrity Sculptures

Good morning, Darren

I believe the new series is starting on 17<sup>th</sup> November – do you know what date the sculptures will be going up for auction?

Kind regards

**Ryan Grimward**

Dirprwy Clerc y Dref/Deputy Town Clerk  
Cyngor Tref Abergele Town Council

Os ydych wedi derbyn yr e-bost hwn ar gam, anfonwch o a [info@abergeletowncouncil.gov.wales](mailto:info@abergeletowncouncil.gov.wales)  
If you have received this email in error, please forward it to [info@abergeletowncouncil.gov.wales](mailto:info@abergeletowncouncil.gov.wales)

Peidiwch a printio'r neges yma os nad oes angen - Please don't print this e-mail unless you really need to

Lleihau Ailddefnyddio Ailgylchu ✓ Reduce Re-use Recycle ♻️

**From:** darren kirk <northwalesauctions@hotmail.co.uk>  
**Sent:** 16 September 2024 09:59  
**To:** ATC Deputy Clerk <deputyclerk@abergeletowncouncil.gov.wales>  
**Subject:** Re: I'm A Celebrity Sculptures

Morning Ryan,